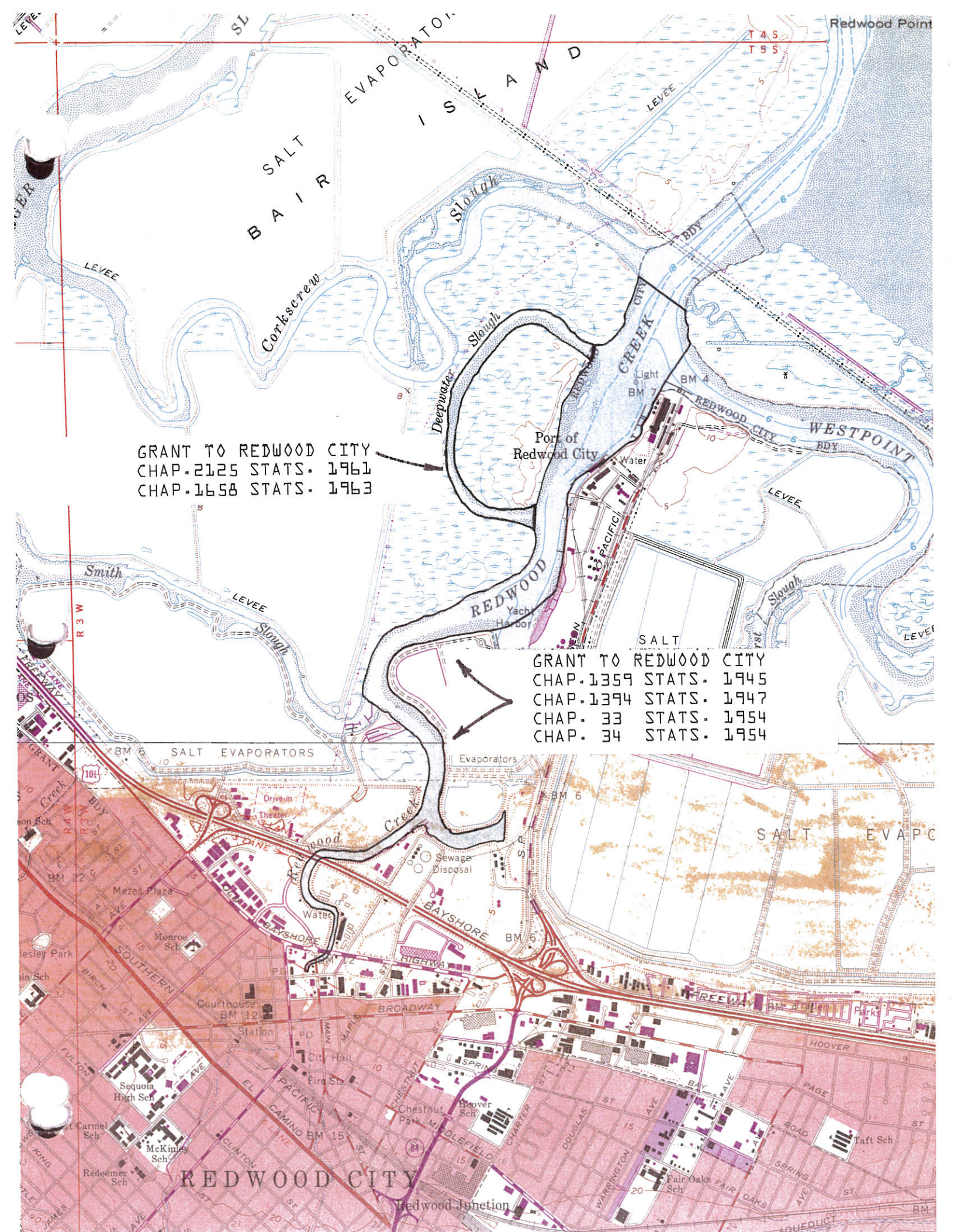


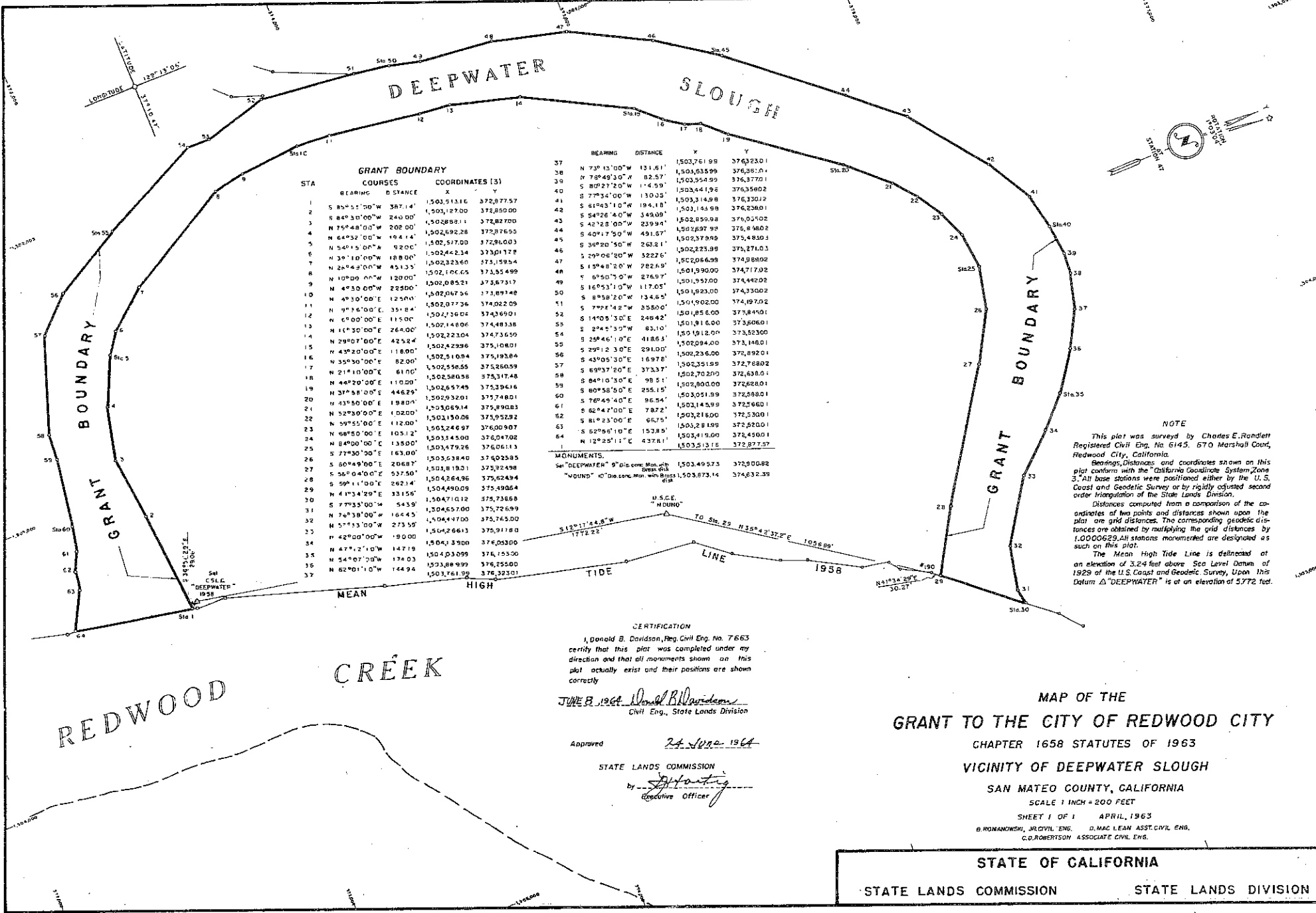
GRANT TO REDWOOD CITY  
 CHAP. 2125 STATS. 1961  
 CHAP. 1658 STATS. 1963

GRANT TO REDWOOD CITY  
 CHAP. 1359 STATS. 1945  
 CHAP. 1394 STATS. 1947  
 CHAP. 33 STATS. 1954  
 CHAP. 34 STATS. 1954

REDWOOD CITY

Redwood Junction

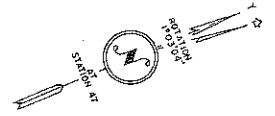
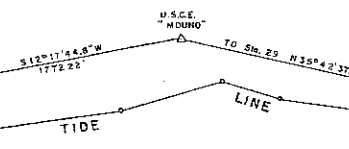




GRANT BOUNDARY COURSES			
STA	BEARING	DISTANCE	COORDINATES (3)
			X Y
1	S 85°51'00"W	387.14'	1,503,513.16 372,877.57
2	N 84°30'00"W	240.00'	1,503,127.00 372,850.00
3	N 75°48'00"W	202.00'	1,502,898.11 372,827.00
4	N 64°32'00"W	194.14'	1,502,692.28 372,796.55
5	N 54°15'00"W	92.00'	1,502,517.00 372,960.03
6	N 30°10'00"W	188.00'	1,502,442.34 373,017.72
7	N 24°42'00"W	451.35'	1,502,323.60 373,199.54
8	N 10°00'00"W	120.00'	1,502,100.65 373,554.99
9	N 4°30'00"W	225.00'	1,502,085.21 373,673.17
10	N 4°30'00"E	125.00'	1,502,067.56 373,691.48
11	N 9°16'00"E	351.84'	1,502,077.36 374,022.09
12	N 6°00'00"E	115.00'	1,502,148.06 374,069.01
13	N 1°50'00"E	264.00'	1,502,148.06 374,483.38
14	N 29°07'00"E	423.42'	1,502,223.04 375,136.50
15	N 43°20'00"E	118.00'	1,502,429.96 375,193.84
16	N 35°30'00"E	82.00'	1,502,510.84 375,190.01
17	N 21°10'00"E	61.00'	1,502,586.55 375,160.59
18	N 44°20'00"E	110.00'	1,502,586.55 375,317.48
19	N 37°58'00"E	446.29'	1,502,574.99 375,394.16
20	N 43°50'00"E	198.00'	1,502,320.01 375,748.01
21	N 52°30'00"E	182.00'	1,502,069.14 375,890.83
22	N 52°30'00"E	112.00'	1,501,150.08 375,952.82
23	N 59°55'00"E	105.12'	1,501,246.97 376,000.97
24	N 68°50'00"E	105.12'	1,501,145.00 376,047.02
25	N 84°00'00"E	135.00'	1,501,479.26 376,061.13
26	S 77°30'00"E	163.00'	1,503,638.40 376,025.85
27	S 60°49'00"E	206.87'	1,503,819.31 375,324.98
28	S 56°04'00"E	537.50'	1,504,264.96 375,624.94
29	S 59°11'00"E	262.14'	1,504,490.09 375,490.64
30	N 41°34'29"E	331.56'	1,504,710.12 375,736.68
31	S 77°35'00"W	543.59'	1,504,657.00 375,726.99
32	N 74°38'00"W	164.45'	1,504,497.00 375,765.00
33	N 51°33'00"W	273.59'	1,504,266.13 375,911.80
34	N 42°00'00"W	90.00'	1,504,390.00 376,003.00
35	N 47°21'00"W	147.19'	1,504,030.99 376,153.30
36	N 54°07'00"W	174.03'	1,503,889.99 376,255.00
37	N 62°01'00"W	144.94'	1,503,761.99 376,323.01

BEARING	DISTANCE	X	Y
37		1,503,761.99	376,323.01
38	N 73°13'00"W	131.61'	1,503,635.99
39	S 78°49'30"W	82.57'	1,503,554.99
40	S 77°34'00"W	130.05'	1,503,441.96
41	S 61°43'10"W	194.18'	1,503,314.98
42	S 54°26'40"W	349.09'	1,503,143.98
43	S 42°28'00"W	239.94'	1,502,859.98
44	S 40°17'50"W	491.67'	1,502,697.98
45	S 34°20'50"W	263.31'	1,502,378.98
46	S 29°06'20"W	522.67'	1,502,223.98
47	S 15°48'20"W	782.49'	1,501,990.00
48	S 6°50'50"W	276.97'	1,501,823.00
49	S 16°53'10"W	117.05'	1,501,823.00
50	S 8°58'20"W	134.65'	1,501,902.00
51	S 7°08'42"W	355.00'	1,501,856.00
52	S 14°05'30"E	246.42'	1,501,816.00
53	S 2°41'30"W	83.10'	1,501,816.00
54	S 25°46'10"E	418.63'	1,502,094.00
55	S 29°12'30"E	291.00'	1,502,236.00
56	S 43°05'30"E	169.78'	1,502,351.99
57	S 69°37'20"E	373.37'	1,502,702.00
58	S 84°10'30"E	98.51'	1,502,800.00
59	S 80°58'50"E	255.15'	1,503,051.99
60	S 76°49'40"E	96.54'	1,503,143.99
61	S 62°47'00"E	78.72'	1,503,216.00
62	S 81°23'00"E	96.71'	1,503,216.00
63	S 62°06'10"E	153.85'	1,503,216.00
64	N 12°25'11"E	437.81'	1,503,513.16

MONUMENTS.  
 S<sup>W</sup> "DEEPWATER" 9" Dia. Conc. Mon. with Brass 1,503,494.573 372,900.482  
 "GROUND" 10" Dia. Conc. Mon. with Brass 1,503,873.14 374,832.33



NOTE  
 This plat was surveyed by Charles E. Randlett Registered Civil Eng. No. 6145, 670 Marshall Court, Redwood City, California.  
 Bearings, Distances and Coordinates shown on this plat conform with the California Coordinate System Zone 3. All base stations were positioned either by the U.S. Coast and Geodetic Survey or by rigidly adjusted second order triangulation of the State Lands Division.  
 Distances computed from a comparison of the coordinates of two points and distances shown upon the plat are grid distances. The corresponding geodetic distances are obtained by multiplying the grid distances by 1.0000629. All stations monumented are designated as such on this plat.  
 The Mean High Tide Line is delineated at an elevation of 3.24 feet above Sea Level Datum of 1929 of the U.S. Coast and Geodetic Survey. Upon this Datum Δ "DEEPWATER" is at an elevation of 5.772 feet.

CERTIFICATION  
 I, Donald B. Davidson, Reg. Civil Eng. No. 7663  
 certify that this plat was completed under my  
 direction and that all monuments shown on this  
 plat actually exist and their positions are shown  
 correctly

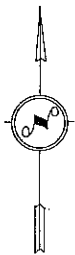
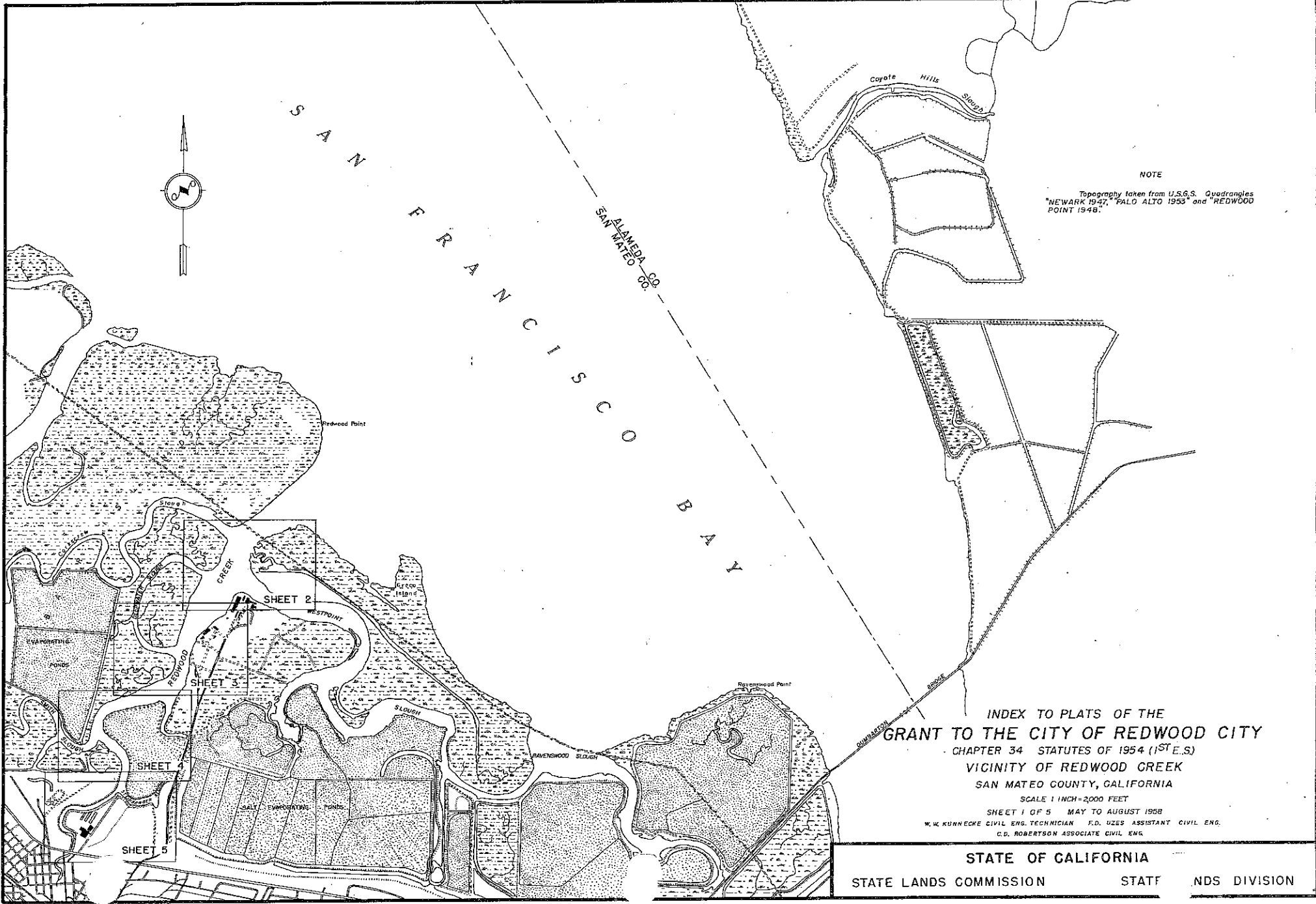
JUNE 8, 1964 *Donald B. Davidson*  
 Civil Eng., State Lands Division

Approved *24 June 1964*

STATE LANDS COMMISSION  
 by *[Signature]*  
 Executive Officer

MAP OF THE  
**GRANT TO THE CITY OF REDWOOD CITY**  
 CHAPTER 1658 STATUTES OF 1963  
 VICINITY OF DEEPWATER SLOUGH  
 SAN MATEO COUNTY, CALIFORNIA  
 SCALE 1 INCH = 200 FEET  
 SHEET 1 OF 1 APRIL, 1963  
 B. ROMANOWSKI, JR. CIVIL ENG. D. MAC LEAN ASST. CIVIL ENG.  
 C.O. ROBERTSON ASSOCIATE CIVIL ENG.

STATE OF CALIFORNIA  
 STATE LANDS COMMISSION STATE LANDS DIVISION



NOTE  
 Topography taken from U.S.G.S. Quadrangles  
 "NEWARK 1947," "PALO ALTO 1953" and "REDWOOD  
 POINT 1948."

INDEX TO PLATS OF THE  
**GRANT TO THE CITY OF REDWOOD CITY**  
 CHAPTER 34 STATUTES OF 1954 (1<sup>ST</sup> E.S.)  
 VICINITY OF REDWOOD CREEK  
 SAN MATEO COUNTY, CALIFORNIA

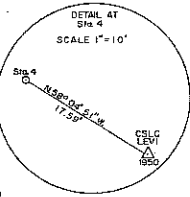
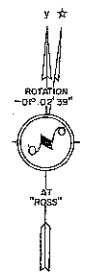
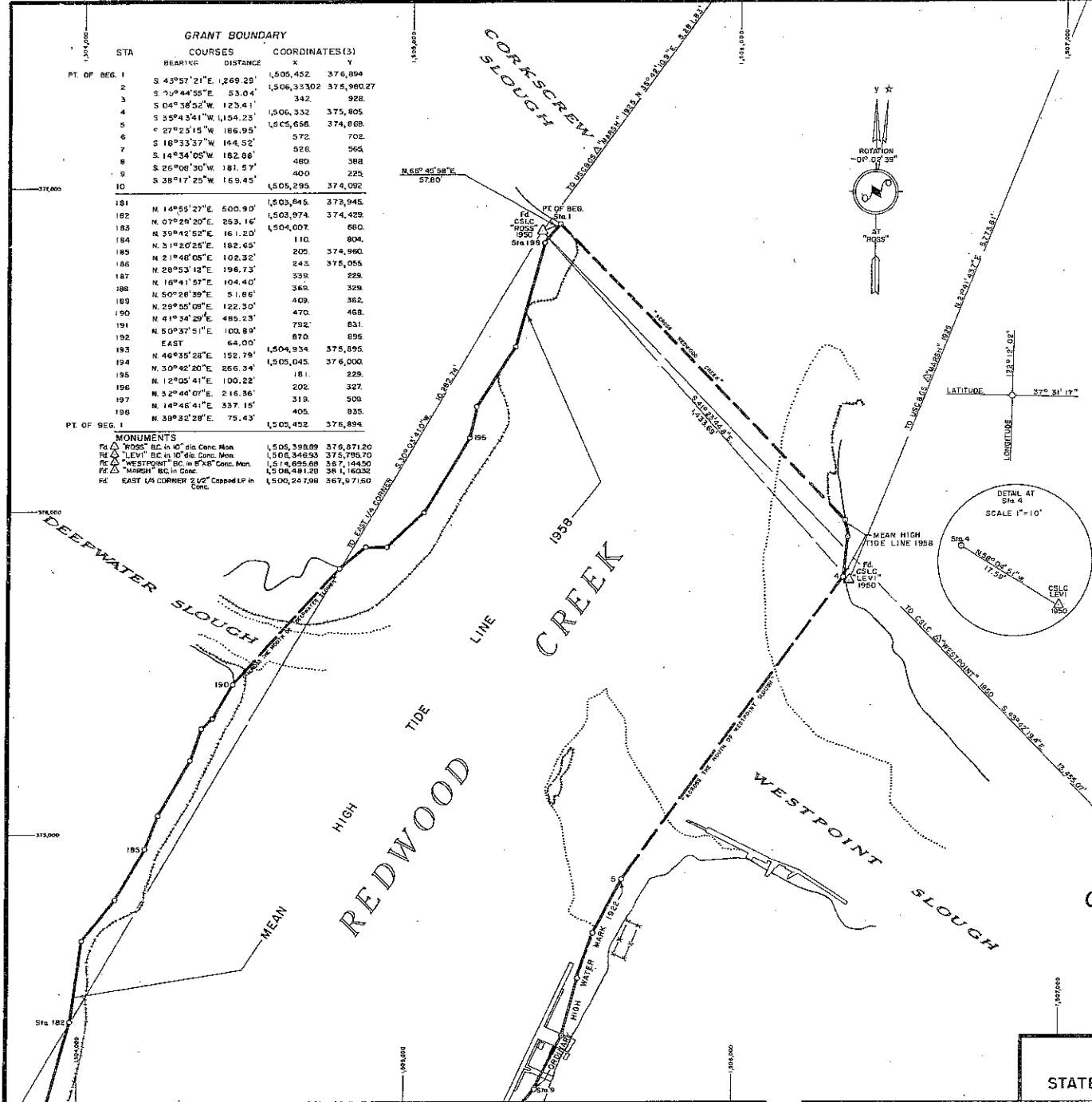
SCALE 1 INCH = 2000 FEET  
 SHEET 1 OF 5 MAY TO AUGUST 1958  
 W.W. KUNNECKE CIVIL ENG. TECHNICIAN F.D. UZES ASSISTANT CIVIL ENG.  
 C.D. ROBERTSON ASSOCIATE CIVIL ENG.

STATE OF CALIFORNIA  
 STATE LANDS COMMISSION      STAFF      NDS DIVISION

GRANT BOUNDARY			
STA	COURSES	COORDINATES(3)	
PT. OF BEG. 1	BEARING DISTANCE	X	Y
2	S 43°57' 21" E 269.28'	1,505,452	376,894
3	S 7°09' 44" 55" E 83.04'	1,506,33302	375,98027
4	S 04° 38' 52" W 123.41'	342	928
5	S 35° 43' 41" W 1,154.23'	1,506,332	375,805
6	S 27° 25' 15" W 186.95'	1,505,658	374,868
7	S 18° 33' 37" W 144.52'	572	702
8	S 14° 34' 05" W 182.86'	526	565
9	S 26° 08' 30" W 181.57'	480	388
10	S 39° 17' 25" W 169.45'	400	225
		1,505,295	374,092

181	N 14° 55' 27" E 500.90'	1,503,845	373,945
182	N 07° 29' 20" E 253.16'	1,503,974	374,429
183	N 39° 42' 52" E 161.20'	1,504,007	680
184	N 31° 20' 25" E 182.65'	110	804
185	N 21° 48' 05" E 102.32'	205	374,960
186	N 28° 53' 12" E 198.73'	243	375,055
187	N 18° 41' 57" E 104.40'	339	229
188	N 50° 28' 38" E 51.86'	369	329
189	N 29° 55' 08" E 122.30'	409	362
190	N 41° 34' 29" E 489.23'	470	468
191	N 50° 37' 51" E 100.89'	792	831
192	EAST 64.00'	870	895
193	N 46° 35' 28" E 152.79'	1,504,934	375,895
194	N 30° 42' 20" E 266.34'	1,505,045	376,000
195	N 12° 05' 41" E 100.22'	181	229
196	N 32° 44' 07" E 216.56'	202	327
197	N 14° 46' 41" E 337.15'	319	509
198	N 14° 46' 41" E 337.15'	405	835
199	N 39° 32' 28" E 75.43'	1,505,452	376,894

MONUMENTS			
FD	"ROSS" BC in 10" dia Conc. Mon.	1,505,398.89	376,871.20
RE	"LEVI" BC in 10" dia Conc. Mon.	1,506,346.93	375,799.70
FC	"WESTPOINT" BC in 8" dia Conc. Mon.	1,514,095.68	367,144.50
FE	"MARSH" BC in Conc.	1,508,491.28	381,163.32
FE	EAST 1/4 CORNER 2 1/2" Copied LP in Conc.	1,500,247.98	367,971.50



**NOTE**  
 Bearings, distances and coordinates shown on this plot conform with California Coordinate System, Zone III. Distances shown on this plot are grid distances. The corresponding geodetic distance is obtained by multiplying the grid distance by 1.000627. All stations monumented are designated as such on this plot.  
 The Mean High Tide Line is delineated at an elevation of 3.24 feet above Sea Level Datum of 1928. Upon this Datum  $\Delta$  "LEVI" is at an elevation of 4.352 feet.

Filed for record at request of State Lands Commission December 30, 1959 in Volume 4 of Licensed Land Surveyors Maps on Pages 69, 70, 71, 72 and 73 under Serial No. 190535.  
 RUTH KIRSTE  
 County Recorder of San Mateo County

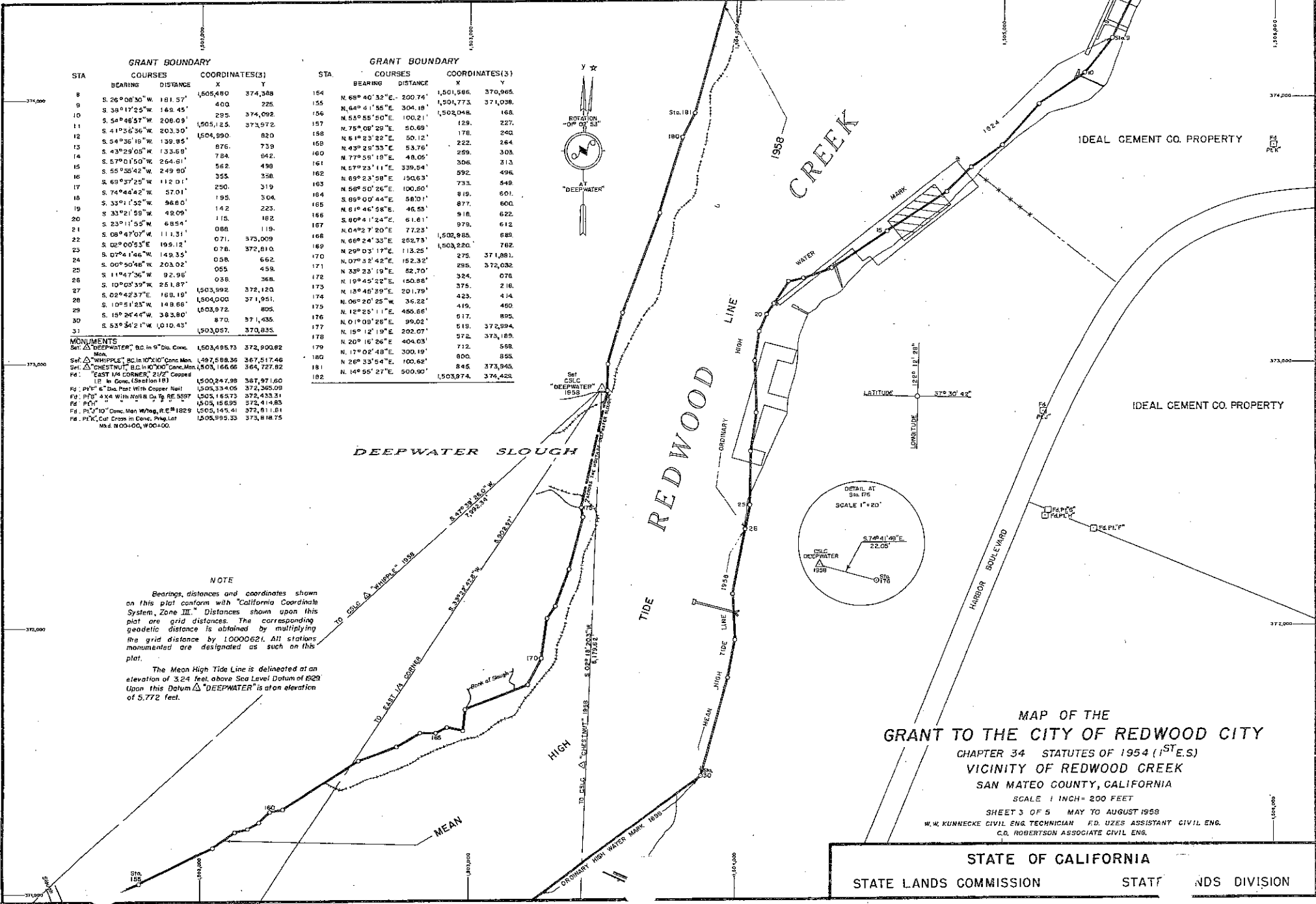
**CERTIFICATION**  
 I, Donald B. Davidson, Reg. Civil Eng. No. 7663, certify that these plats were completed under my direction and that all monuments shown on this plot actually exist and their positions are shown correctly.  
 12-21-1959 *Donald B. Davidson*  
 Civil Engineer, State Lands Division

Approved 12-21-1959  
 STATE LANDS COMMISSION  
 by *J. J. Hartig*  
 Executive Officer

**MAP OF THE GRANT TO THE CITY OF REDWOOD CITY**  
 CHAPTER 34 STATUTES OF 1954 (1<sup>ST</sup> E.S.)  
 VICINITY OF REDWOOD CREEK  
 SAN MATEO COUNTY, CALIFORNIA

SCALE 1 INCH = 200 FEET  
 SHEET 2 OF 5 MAY TO AUGUST 1958  
 W.W. KUNNECKE CIVIL ENG. TECHNICIAN F.D. UZES ASSISTANT CIVIL ENG.  
 C.D. ROBERTSON ASSOCIATE CIVIL ENG.

STATE OF CALIFORNIA  
 STATE LANDS COMMISSION STAT ANDS DIVISION



**GRANT BOUNDARY**

STA	BEARING	DISTANCE	COORDINATES(3) X	Y
8	S. 26° 08' 30" W.	181.57'	1,505,480	374,388
9	S. 38° 17' 25" W.	168.45'	400	225
10	S. 58° 48' 57" W.	208.09'	285	374,092
11	S. 41° 36' 36" W.	203.30'	1,505,125	373,872
12	S. 54° 36' 18" W.	139.85'	1,504,990	820
13	S. 43° 29' 05" W.	133.69'	876	739
14	S. 57° 01' 50" W.	264.81'	784	642
15	S. 55° 38' 42" W.	249.90'	562	490
16	S. 63° 37' 25" W.	112.01'	355	358
17	S. 74° 44' 42" W.	57.01'	250	319
18	S. 33° 11' 32" W.	96.80'	195	304
19	S. 33° 21' 58" W.	98.09'	142	223
20	S. 23° 11' 55" W.	685.4'	115	182
21	S. 08° 47' 07" W.	111.31'	088	119
22	S. 02° 00' 33" E.	199.12'	071	373,009
23	S. 07° 41' 46" W.	149.35'	078	372,810
24	S. 00° 50' 48" W.	203.02'	058	662
25	S. 11° 47' 26" W.	92.38'	055	459
26	S. 10° 05' 39" W.	251.87'	038	368
27	S. 02° 42' 37" E.	168.19'	1,503,992	372,120
28	S. 10° 51' 23" W.	148.86'	1,504,000	371,951
29	S. 15° 24' 47" W.	383.80'	1,503,972	805
30	S. 53° 54' 21" W.	1010.43'	870	371,435
31			1,503,057	370,835

**GRANT BOUNDARY**

STA	BEARING	DISTANCE	COORDINATES(3) X	Y
154	N. 68° 40' 32" E.	200.74'	1,501,586	370,965
155	N. 64° 41' 55" E.	304.18'	1,501,773	371,038
156	N. 53° 55' 50" E.	100.21'	1,502,048	168
157	N. 75° 09' 25" E.	50.68'	129	227
158	N. 61° 23' 22" E.	50.12'	178	240
159	N. 43° 25' 33" E.	53.76'	222	264
160	N. 77° 35' 19" E.	48.05'	259	303
161	N. 57° 23' 11" E.	339.54'	306	313
162	N. 69° 23' 58" E.	150.63'	392	496
163	N. 58° 50' 26" E.	100.60'	733	549
164	S. 89° 00' 44" E.	5801'	819	601
165	N. 61° 46' 58" E.	46.53'	877	600
166	S. 80° 41' 24" E.	61.61'	918	622
167	N. 04° 27' 20" E.	77.23'	979	612
168	N. 68° 24' 33" E.	262.73'	1,502,985	689
169	N. 29° 03' 17" E.	113.25'	1,503,220	782
170	N. 07° 32' 42" E.	152.32'	275	371,881
171	N. 38° 23' 19" E.	52.70'	295	372,032
172	N. 19° 45' 22" E.	150.88'	324	078
173	N. 13° 48' 29" W.	201.79'	375	216
174	N. 06° 20' 25" W.	36.22'	423	414
175	N. 12° 25' 11" E.	486.66'	419	460
176	N. 01° 09' 28" E.	95.02'	517	805
177	N. 19° 12' 19" E.	202.07'	519	372,994
178	N. 20° 16' 26" E.	404.03'	572	373,189
179	N. 17° 02' 48" E.	300.19'	712	568
180	N. 28° 33' 54" E.	100.62'	800	855
181	N. 14° 55' 27" E.	500.90'	845	373,945
182			1,503,974	374,425

**MONUMENTS**  
 Set  $\Delta$  "DEEPWATER" B.C. in 9" Dia. Conc. 1,503,495.73 372,900.82  
 Set  $\Delta$  "WHIPPLE" B.C. in 10" Dia. Conc. Mon. 1,497,588.36 367,517.46  
 Set  $\Delta$  "CHESTNUT" B.C. in 10" Dia. Conc. Mon. 1,503,166.66 364,727.92  
 Fd: "EAST 1/4 CORNER, 21/2" Copied  
 (B in Conc. (Station 18)) 1,500,247.98 387,971.60  
 Fd: "P.C." 4" Dia. First Wire Copper Nail 1,505,334.05 372,365.09  
 Fd: "P.C." 4x4 WOOD NAIL ON TO BE 5587 1,505,165.73 372,433.31  
 Fd: "P.C." 1,505,158.95 372,414.83  
 Fd: "P.C." 1,505,145.41 372,811.51  
 Fd: "P.C." 4x4 Green in Conc. Ring 1,506,995.33 373,818.75  
 Mkd N 00+00, W 00+00.

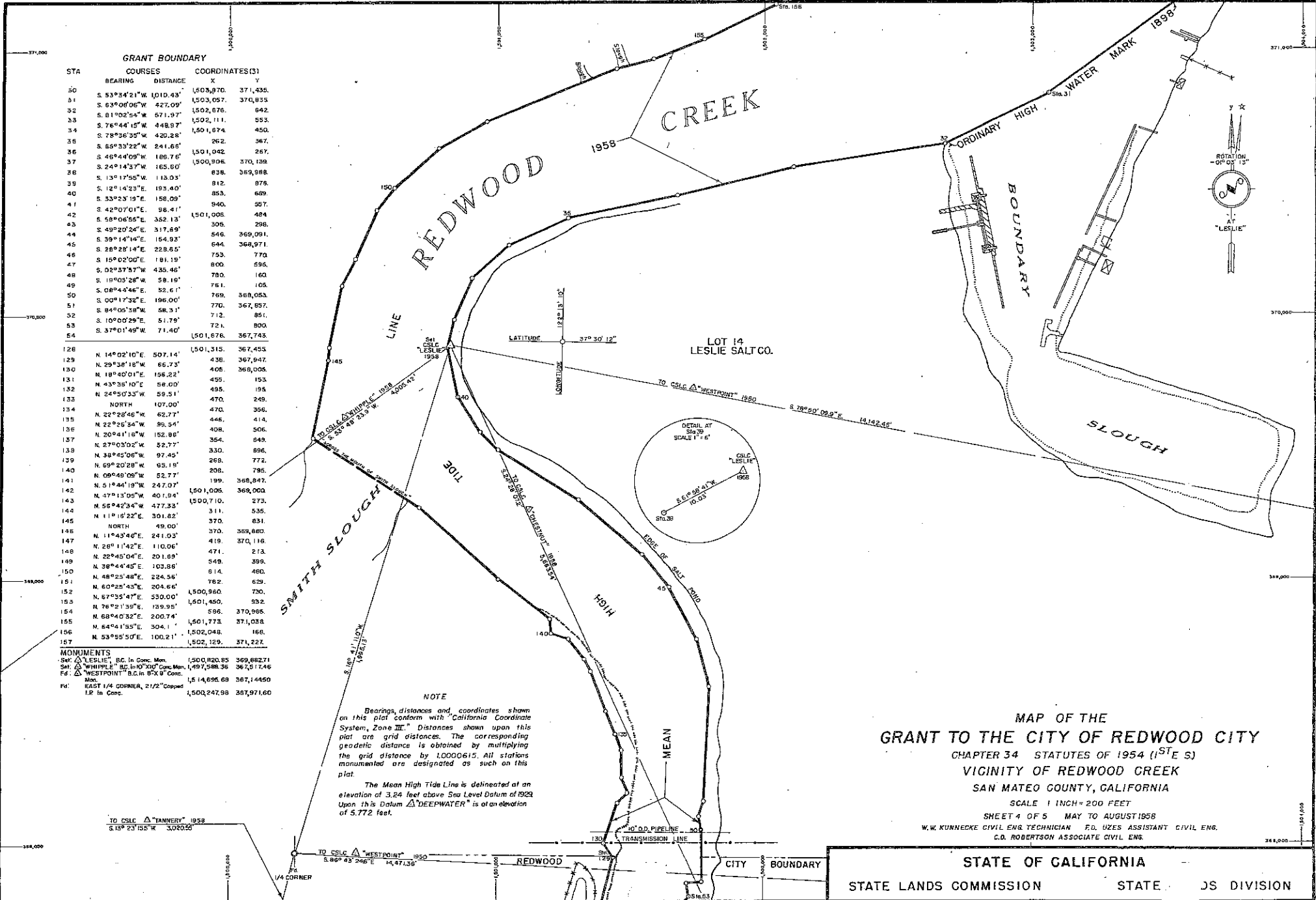
**NOTE**  
 Bearings, distances and coordinates shown on this plat conform with California Coordinate System, Zone III. Distances shown upon this plat are grid distances. The corresponding geodetic distance is obtained by multiplying the grid distance by 1.0000621. All stations monumented are designated as such on this plat.

The Mean High Tide Line is delineated at an elevation of 3.24 feet above Sea Level Datum of 1929. Upon this Datum  $\Delta$  "DEEPWATER" is at an elevation of 5.772 feet.

**MAP OF THE  
 GRANT TO THE CITY OF REDWOOD CITY  
 CHAPTER 34 STATUTES OF 1954 (1<sup>ST</sup> E.S.)  
 VICINITY OF REDWOOD CREEK  
 SAN MATEO COUNTY, CALIFORNIA**

SCALE 1 INCH = 200 FEET  
 SHEET 3 OF 5 MAY TO AUGUST 1958  
 W.W. KUNNECKE CIVIL ENG. TECHNICIAN F.D. UZES ASSISTANT CIVIL ENG.  
 C.O. ROBERTSON ASSOCIATE CIVIL ENG.

**STATE OF CALIFORNIA  
 STATE LANDS COMMISSION STATE LANDS DIVISION**



STA	COURSES	COORDINATES (3)
	BEARING DISTANCE	X Y
30	S. 53°34'21" W. 1010.43'	1503,970. 371,435.
31	S. 53°06'06" W. 427.09'	1503,057. 370,855.
32	S. 81°02'54" W. 571.97'	1502,676. 642.
33	S. 76°44'15" W. 448.97'	1502,111. 553.
34	S. 78°36'35" W. 420.28'	1501,674. 450.
35	S. 85°33'22" W. 241.66'	262. 367.
36	S. 46°44'09" W. 186.76'	1501,042. 257.
37	S. 24°14'37" W. 165.60'	1500,906. 370,139.
38	S. 13°17'55" W. 113.03'	838. 369,988.
39	S. 12°14'23" E. 193.40'	812. 876.
40	S. 33°23'19" E. 158.09'	853. 689.
41	S. 42°07'01" E. 98.41'	940. 507.
42	S. 58°06'55" E. 352.13'	1501,005. 484.
43	S. 49°20'24" E. 317.69'	306. 298.
44	S. 39°14'14" E. 154.93'	546. 369,091.
45	S. 28°28'14" E. 228.65'	644. 368,971.
46	S. 16°02'00" E. 191.15'	753. 770.
47	S. 02°37'37" W. 435.40'	800. 595.
48	S. 19°03'20" W. 58.19'	780. 160.
49	S. 08°44'46" E. 52.61'	761. 105.
50	S. 00°17'32" E. 195.00'	769. 368,053.
51	S. 84°06'38" W. 38.31'	770. 367,857.
52	S. 10°00'29" E. 51.79'	712. 851.
53	S. 37°01'49" W. 71.40'	721. 800.
54		1501,676. 367,743.
128	N. 14°02'10" E. 507.14'	1501,315. 367,453.
129	N. 29°38'18" W. 66.73'	438. 367,947.
130	N. 18°40'01" E. 158.22'	408. 369,005.
131	N. 43°35'10" E. 58.00'	455. 153.
132	N. 24°50'33" W. 59.51'	495. 195.
133	NORTH 107.00'	470. 249.
134	N. 22°28'46" W. 62.77'	470. 356.
135	N. 22°08'34" W. 59.54'	446. 414.
136	N. 20°41'16" W. 152.98'	408. 506.
137	N. 27°03'02" W. 52.77'	354. 649.
138	N. 38°45'08" W. 97.45'	330. 696.
139	N. 69°20'28" W. 95.19'	269. 772.
140	N. 09°49'09" W. 52.77'	208. 795.
141	N. 51°44'19" W. 247.07'	199. 368,847.
142	N. 47°13'05" W. 401.94'	1501,005. 369,000.
143	N. 56°42'34" W. 477.33'	1500,710. 273.
144	N. 11°16'22" E. 301.82'	311. 535.
145	NORTH 49.00'	370. 631.
146	N. 11°43'46" E. 241.03'	370. 369,683.
147	N. 28°11'42" E. 110.06'	419. 370,116.
148	N. 22°45'04" E. 201.69'	471. 213.
149	N. 38°44'45" E. 103.86'	549. 399.
150	N. 48°25'48" E. 224.56'	614. 460.
151	N. 60°25'43" E. 204.66'	782. 629.
152	N. 67°35'41" E. 330.00'	1500,860. 730.
153	N. 76°02'13" E. 139.95'	1501,450. 532.
154	N. 68°40'32" E. 200.74'	596. 370,965.
155	N. 64°41'55" E. 304.1'	1501,773. 371,038.
156	N. 53°55'50" E. 100.21'	1502,048. 166.
157		1502,129. 371,227.

**MONUMENTS**

Stn. $\Delta$ "LESLIE", B.C. in Conc. Mon.	1500,820.85	369,882.71
Stn. $\Delta$ "WHIPPLE", B.C. in 10" Dia. Conc. Mon.	1497,368.36	367,511.246
Stn. $\Delta$ "WESTPOINT", B.C. in 6" Dia. Conc. Mon.	1514,696.68	367,144.50
Stn. $\Delta$ "TANNERY", B.C. in 6" Dia. Conc. Mon.	1500,247.98	367,971.60

**NOTE**

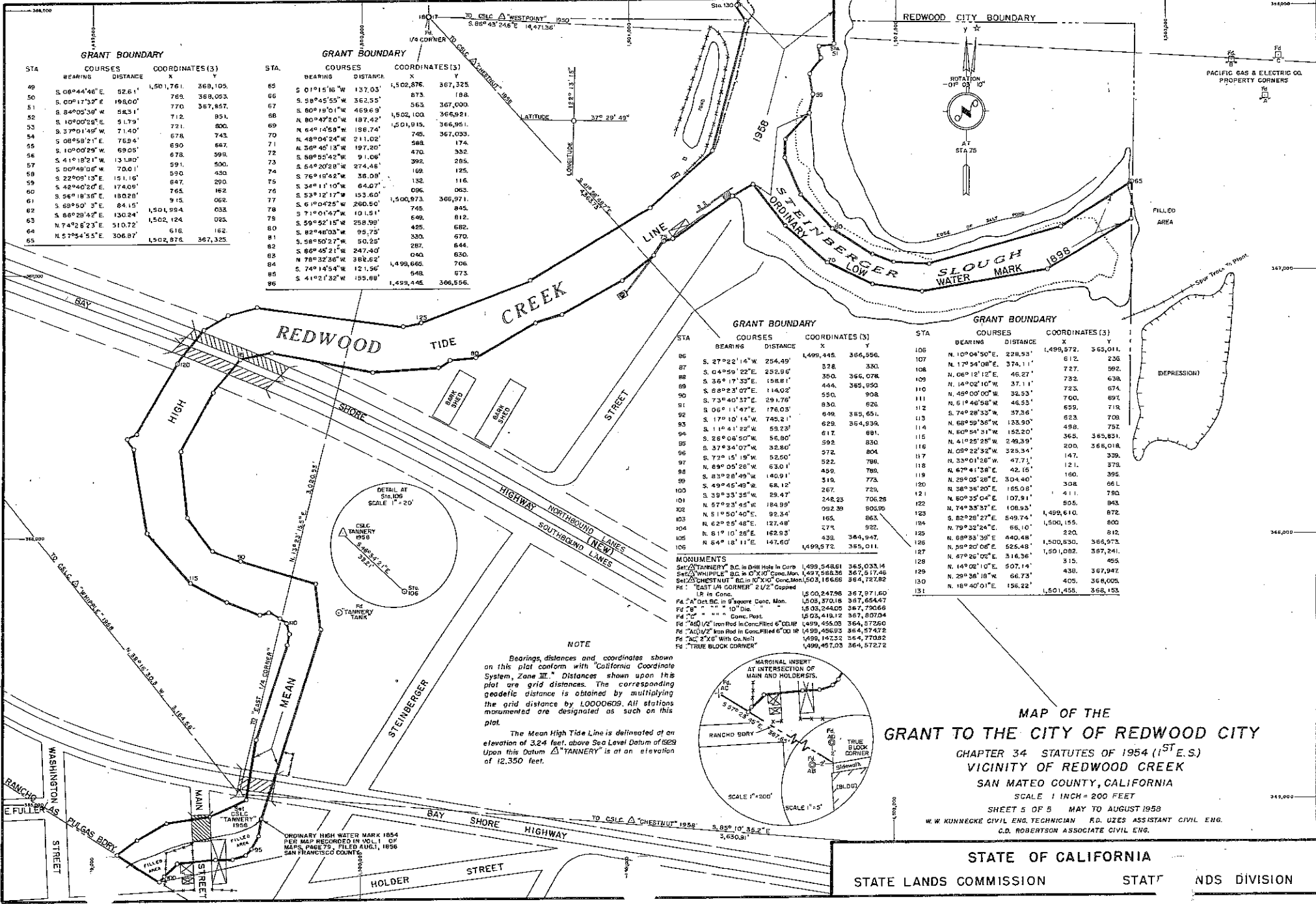
Bearings, distances and coordinates shown on this plat conform with California Coordinate System, Zone III. Distances shown upon this plat are grid distances. The corresponding geodetic distance is obtained by multiplying the grid distance by 1.0000615. All stations monumented are designated as such on this plat.

The Mean High Tide Line is delineated at an elevation of 3.24 feet above Sea Level Datum of 1929. Upon this Datum  $\Delta$  "DEEPWATER" is at an elevation of 5.772 feet.

**MAP OF THE  
GRANT TO THE CITY OF REDWOOD CITY  
CHAPTER 34 STATUTES OF 1954 (1<sup>ST</sup> S.)  
VICINITY OF REDWOOD CREEK  
SAN MATEO COUNTY, CALIFORNIA**

SCALE 1 INCH = 200 FEET  
SHEET 4 OF 5 MAY TO AUGUST 1958  
W.W. KUNNEKE CIVIL ENG. TECHNICIAN F.D. UZES ASSISTANT CIVIL ENG.  
C.D. ROBERTSON ASSOCIATE CIVIL ENG.

**STATE OF CALIFORNIA**  
STATE LANDS COMMISSION STATE LANDS DIVISION



**GRANT BOUNDARY**

STA.	BEARING	COURSES	DISTANCE	COORDINATES (3)
				X Y
49	S. 08°44'46"E		52.61'	1,501,761 369,109
50	S. 00°17'32"E		196.00'	769 369,053
51	S. 84°05'38"W		58.31'	770 367,857
52	S. 10°00'28"E		51.79'	712 851
53	S. 37°01'45"W		71.40'	721 800
54	S. 08°58'21"E		76.94'	678 743
55	S. 10°00'29"W		69.05'	690 667
56	S. 41°18'21"W		13.180'	678 599
57	S. 00°48'00"W		7.00'	591 500
58	S. 22°08'13"E		15.116'	590 430
59	S. 42°40'20"E		17.409'	647 295
60	S. 56°18'36"E		18.028'	765 162
61	S. 69°50'3"E		84.15'	915 062
62	S. 86°28'42"E		130.24'	1,501,994 033
63	N. 74°26'23"E		510.72'	1,502,124 025
64	N. 57°54'55"E		306.87'	616 162
65				1,502,876 367,325

**GRANT BOUNDARY**

STA.	BEARING	COURSES	DISTANCE	COORDINATES (3)
				X Y
65	S. 01°15'16"W		137.03'	1,502,876 367,325
66	S. 58°45'55"W		362.55'	873 188
67	S. 60°19'01"W		469.69'	363 367,000
68	N. 80°47'20"W		187.42'	1,502,100 366,921
69	N. 64°14'59"W		158.74'	1,501,915 366,951
70	N. 48°04'24"W		211.02'	745 367,033
71	N. 58°45'13"W		197.20'	588 174
72	S. 58°55'42"W		91.06'	470 352
73	S. 54°20'28"W		274.46'	392 285
74	S. 76°19'42"W		38.08'	169 125
75	S. 34°11'10"W		64.07'	132 116
76	S. 53°12'17"W		153.60'	096 063
77	S. 61°04'25"W		260.50'	1,500,973 366,971
78	S. 71°01'47"W		101.51'	745 845
79	S. 59°52'15"W		258.98'	649 812
80	S. 89°46'03"W		95.75'	425 682
81	S. 58°50'27"W		50.35'	330 670
82	S. 86°45'21"W		247.40'	287 644
83	N. 78°32'36"W		368.62'	040 650
84	S. 74°14'54"W		121.56'	1,499,666 706
85	S. 41°21'32"W		195.89'	548 673
86				1,499,446 366,556

**GRANT BOUNDARY**

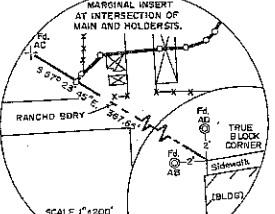
STA.	BEARING	COURSES	DISTANCE	COORDINATES (3)
				X Y
87	S. 27°22'14"W		254.49'	1,499,446 366,556
88	S. 04°59'22"E		258.96'	378 330
89	S. 36°17'33"E		198.81'	350 356,078
90	S. 58°23'07"E		114.02'	444 365,950
91	S. 73°40'57"E		29.77'	550 908
92	S. 95°11'49"E		175.03'	830 626
93	S. 17°10'14"W		745.21'	629 363,651
94	S. 14°41'22"W		59.23'	649 364,939
95	S. 26°04'50"W		56.80'	617 681
96	S. 37°34'07"W		32.80'	592 830
97	N. 72°15'19"W		52.50'	572 804
98	N. 89°05'26"W		63.01'	522 786
99	S. 83°28'49"W		140.91'	459 789
100	S. 49°45'49"W		68.12'	319 773
101	S. 39°33'35"W		29.47'	267 729
102	N. 57°23'45"W		184.99'	242.23 706.28
103	N. 51°50'40"E		92.34'	092.39 805.99
104	N. 62°25'48"E		127.48'	165 863
105	N. 61°10'28"E		162.93'	274 922
106	N. 64°18'11"E		147.60'	439 364,947
107				1,499,572 365,011

**GRANT BOUNDARY**

STA.	BEARING	COURSES	DISTANCE	COORDINATES (3)
				X Y
108	N. 10°04'50"E		228.53'	1,499,572 365,011
109	N. 17°54'08"E		374.11'	612 236
110	N. 06°12'12"E		46.27'	727 692
111	N. 14°02'10"W		37.11'	732 638
112	N. 49°00'00"W		32.53'	725 674
113	N. 51°48'58"W		46.53'	700 691
114	S. 74°28'33"W		37.36'	695 719
115	N. 68°59'36"W		132.90'	623 708
116	N. 80°54'31"W		152.20'	498 757
117	N. 41°25'25"W		246.39'	365 365,831
118	N. 09°22'32"W		325.34'	200 365,018
119	N. 33°01'26"W		47.71'	147 339
120	N. 67°41'38"E		42.16'	121 379
121	N. 28°05'28"E		304.40'	160 395
122	N. 38°38'20"E		165.00'	308 661
123	N. 60°35'04"E		107.91'	411 733
124	N. 74°33'37"E		108.93'	515 893
125	S. 82°28'27"E		549.74'	1,499,610 872
126	N. 79°32'24"E		66.10'	1,500,155 800
127	N. 89°38'58"E		440.48'	200 812
128	N. 59°00'08"E		526.48'	1,500,630 366,973
129	N. 47°26'10"E		316.36'	1,501,082 367,241
130	N. 14°02'10"E		507.14'	315 465
131	N. 29°36'16"W		66.73'	438 367,947
132	N. 18°40'01"E		156.22'	405 366,005
133				1,501,455 368,153

**MONUMENTS**  
 Set at TANNERY BC in D.M. hole in Corb 1,499,546.61 365,033.14  
 Set at TANNERY BC in C.O. hole in Corb 1,499,568.36 367,517.46  
 Set at CHESTNUT BC in C.O. hole in Corb 1,503,166.66 364,727.82  
 IR in Conc. 1,500,247.96 367,971.60  
 IR in Conc. 1,503,370.18 367,654.47  
 IR in Conc. 1,503,244.25 367,706.66  
 IR in Conc. 1,503,419.12 367,807.04  
 IR in Conc. 1,499,456.03 364,572.60  
 IR in Conc. 1,499,456.93 364,574.72  
 IR in Conc. 1,499,162.52 364,770.82  
 IR in Conc. 1,499,457.03 364,572.72

**NOTE**  
 Bearings, distances and coordinates shown on this plat conform with California Coordinate System, Zone III. Distances shown upon this plat are grid distances. The corresponding geodetic distance is obtained by multiplying the grid distance by 1.0000609. All stations monumented are designated as such on this plat.  
 The Mean High Tide Line is delineated at an elevation of 3.24 feet, above Sea Level Datum of 1929 upon this Datum. TANNERY is at an elevation of 12.350 feet.



**MAP OF THE  
 GRANT TO THE CITY OF REDWOOD CITY  
 CHAPTER 34 STATUTES OF 1954 (1ST E.S.)  
 VICINITY OF REDWOOD CREEK  
 SAN MATEO COUNTY, CALIFORNIA  
 SCALE 1 INCH = 200 FEET**

SHEET 5 OF 5 MAY TO AUGUST 1958  
 W.W. KUNNEKE CIVIL ENG. TECHNICIAN R.D. UZES ASSISTANT CIVIL ENG.  
 C.D. ROBERTSON ASSOCIATE CIVIL ENG.

**STATE OF CALIFORNIA  
 STATE LANDS COMMISSION STATE LANDS DIVISION**