

# REDWOOD CITY HARBOR DREDGING SAFETY MEETING



03 August 2017

*"The views, opinions and findings contained in this report are those of the author(s) and should not be construed as an official Department of the Army position, policy or decision, unless so designated by other official documentation."*



**US Army Corps  
of Engineers.**



# MEETING AGENDA

1. Meeting Purpose
2. Project Information
3. Equipment and Hazards
4. Requirements
5. Safety Topic
6. Summary
7. Comments



US Army Corps  
of Engineers.



## PURPOSE OF PUBLIC MEETING

Provide information regarding the upcoming dredging of the Federal channel at the Port of Redwood City (Station 0+00 to Station 208+49)



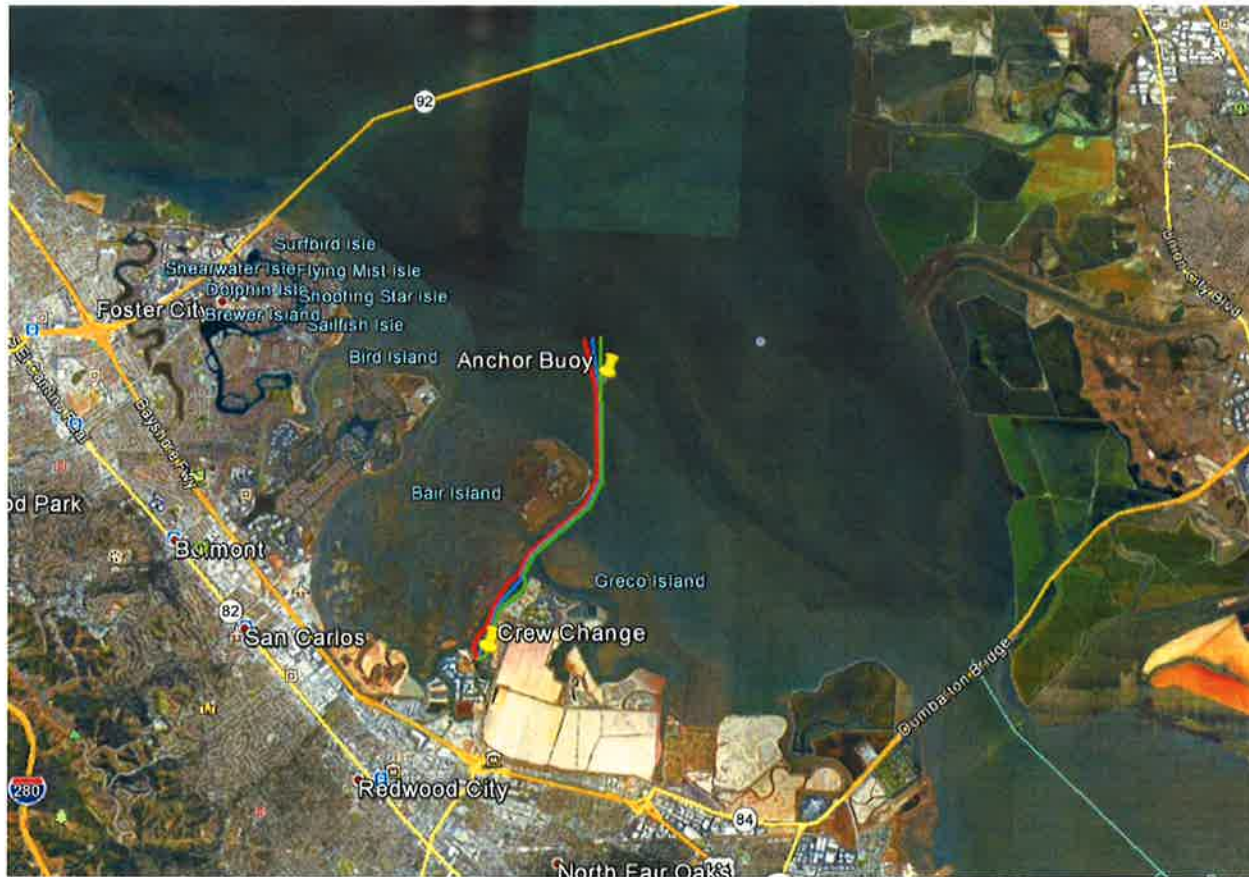
US Army Corps  
of Engineers



# Redwood City Harbor Maintenance Dredging Project

Redwood City, CA

Contract:

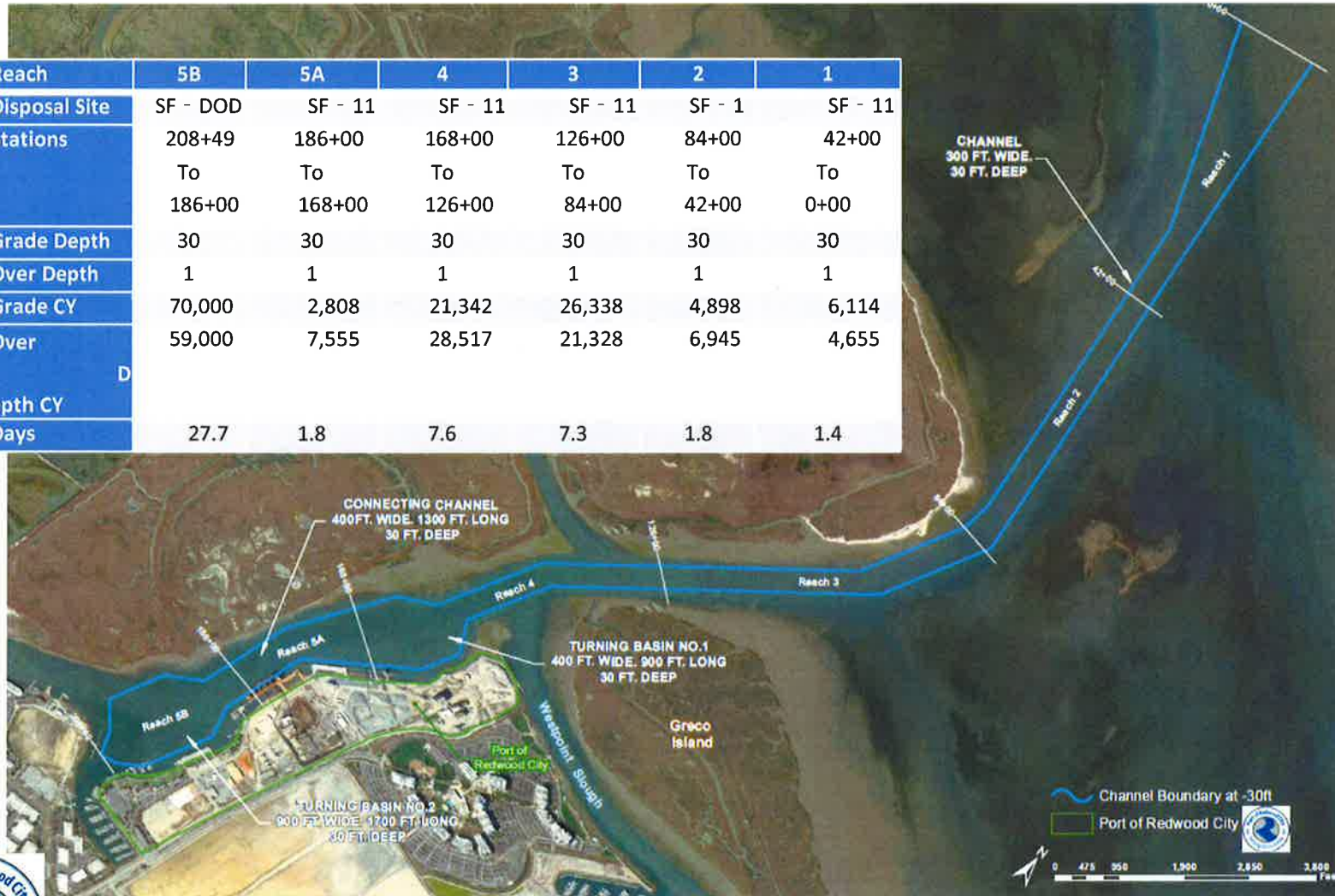


US Army Corps  
of Engineers.



# SCOPE OF WORK

Reach	5B	5A	4	3	2	1
Disposal Site	SF - DOD	SF - 11	SF - 11	SF - 11	SF - 1	SF - 11
Stations	208+49	186+00	168+00	126+00	84+00	42+00
To	To	To	To	To	To	To
	186+00	168+00	126+00	84+00	42+00	0+00
Grade Depth	30	30	30	30	30	30
Over Depth	1	1	1	1	1	1
Grade CY	70,000	2,808	21,342	26,338	4,898	6,114
Over Depth CY	59,000	7,555	28,517	21,328	6,945	4,655
Days	27.7	1.8	7.6	7.3	1.8	1.4



US Army Corps  
of Engineers.



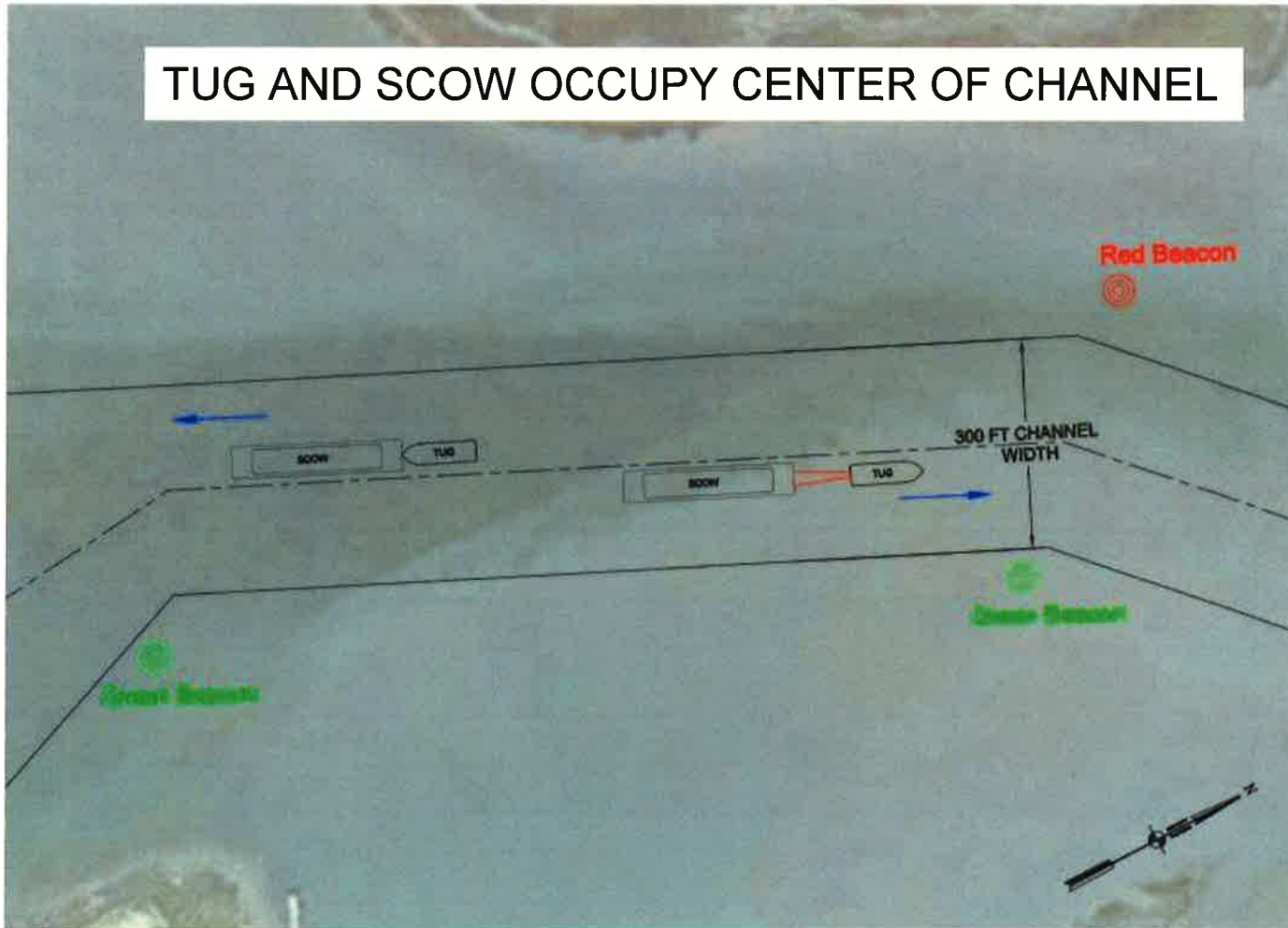
# PROJECT SCHEDULE

Channel dredging and Berth dredging will occur from August 7<sup>th</sup> to October 3<sup>rd</sup>. Dredging will occur continuously until completion (24/7).



# TUG & SCOW IN TRANSIT

TUG AND SCOW OCCUPY CENTER OF CHANNEL



US Army Corps  
of Engineers



# DREDGE EQUIPMENT AND POSSIBLE HAZARDS

Dredge Barge  
Tug Boats  
Survey Boats

- Collision
- Crushed By
- Drowning
- Capsize
- Wake
- Low Vis





## CONTRACTOR VESSEL REQUIREMENTS

The Contractor shall provide guard personnel as required to provide protection in the interest of public safety. Whenever the Contractor's operations create a condition hazardous to the public, he shall furnish at his own expense and without cost to the Government, such guards as are necessary to give adequate warning to the public of any dangerous conditions to be encountered, and he shall furnish, erect, or maintain such lights, signs and other devices as are necessary to prevent accidents and to avoid damage or injury to the public.



US Army Corps  
of Engineers.



## CONTRACTOR VESSEL REQUIREMENTS (CONT)

Contractor request for the safety of everyone that all recreational boaters stay back at least 100 meters from the dredge barge and scow at all times during dredging operations.

Contractor shall suspend operations as required to avoid adversely affecting recreational boaters.

The Federal channel and all of the Port of Redwood City is a no-wake zone and all Contractor operations shall be conducted to avoid generating wakes that could upset recreational boaters.

All delay associated with recreational boaters shall be documented in Daily QC reports.



# NAVIGATION SAFETY MESSAGES

1. Rules of Navigation apply to all craft. Some paddlers don't tend to consider their craft as boats but should as they utilize the same design.
2. Right of way isn't described by CG rules and regulations but there are standards for "give-way" and "stand-on" for all boats in crossing situations; whereby all are responsible "as required by the ordinary practice of seamen" to avoid collision.
3. Intent and action are signaled by both vessels. And "post a lookout" and "maintain a safe speed" are required.



US Army Corps  
of Engineers.



# KAYAKING RULES OF THE ROAD

- Be Aware
- See and Be Seen
- Law of Gross Tonnage (Use Common Sense)
- Know the Rights of Passage
- Know How to Avoid Collisions

SUMMARY: Stay Vigilant, being aware of your visibility or lack thereof. Choose routes that avoid larger less maneuverable watercraft. Learn how to read charts and how to use navigation aids out on the water. Of course, always wear your PFDs. And be sure to know the Kayaking “Rules of the Road.”

Remember to be safe out there!



US Army Corps  
of Engineers.



## SUMMARY: WHAT TO LOOK OUT FOR

- Commercial traffic including dredges, scows, tug boats & survey boats,
- Dredges occupy the entire channel,
- Dredges are maneuver limited,
- Stay outside center of channel when navigating near dredge operations.



US Army Corps  
of Engineers.



# Questions / Comments

**Michael Giari**  
**Executive Director**  
**Port of Redwood City**  
**(650) 306-4150**  
[mgiari@redwoodcityport.com](mailto:mgiari@redwoodcityport.com)

**Eric McMann**  
**Project Manager**  
**Manson Construction Co.**  
**(510) 774-8396**  
[emcmann@mansonconstruction.com](mailto:emcmann@mansonconstruction.com)

**Katherine Reyes**  
**Project Manager**  
**USACE**  
**(415) 503-6847**  
[Katherine.m.reyes@usace.army.mil](mailto:Katherine.m.reyes@usace.army.mil)



US Army Corps  
of Engineers

